

NGEF (HUBLI) LTD.,

(A Government of Karnataka Enterprise)

MANUFACTURERS OF :

Standard Induction squirrel cage / slipring, Energy Efficient, Textile, Crane & Hoist Motors.

Types : AMW, AMW-R, AMEW, AMKW.



COMPANY:

NGEF (HUBLI) Ltd., is a Government of Karnataka state owned enterprise 100% subsidiary of NGEF Ltd., and is located between twin cities of Hubli and Dharwad, Karnataka State. A Reputed manufacturer of electrical motors with world class quality of tough proven German technology.

NGEF (HUBLI) Ltd., has been making significant contribution since 3 decades for the industrial and economic development of the country by supplying electric motors of high quality and reliability as per national and international standards. Our motors are in various industrial application operating across the country and abroad.

MANUFACTURING RANGE :

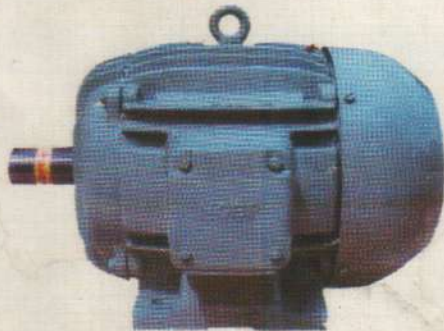
Frame Size : AMW 63-180 : AMW-R 132

Out put : 0.18 kw to 22 kw : 3.6 kw to 5.3 in 4 pole, 2.8 kw to 3.9 kw in 6 pole, 1.7 kw to 2.5 kw in 8 pole

In addition to standard motors, it is also manufacturing special motors such as

- Energy Efficient Motors (AMEW)
- Type 'N' Motors
- Machine Tool Motors
- Increased Safety Motors (eAMW)
- Pole Changing Motors
- Textile Motors (AMT)
- Crane Duty Motors (AMKW)
- Invertor Duty (VVVF)
- Vibrator Motors (VM)
- Dual Voltage Motors
- Application Motors
- Brake Motors

NGEF (HUBLI) Ltd., is an IS/ISO 9001:2008 company committed to maintain the first choice of our valued customers and be always in the leading position for quality product and service. CE Certified



Squirrel Cage Motor Type AMW (TEFC)



Slip-ring Motor Type AMW-R (TEFC)

AS TOUGH ON THE INSIDE AS
THE ENVIRONMENT OUTSIDE

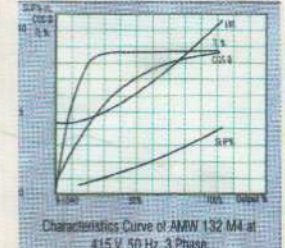
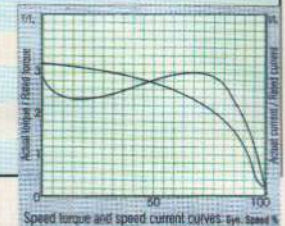


SECTION OF MOTOR

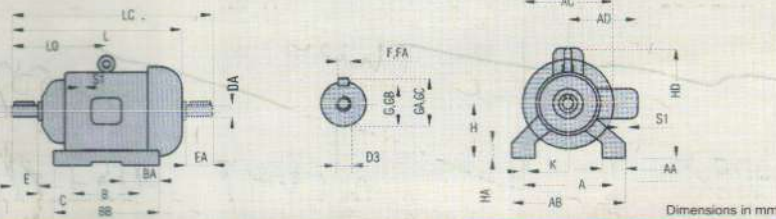
STANDARD SQUIRREL CAGE MOTORS

Electrical data of AC, 3 Phase Standard Squirrel Cage Motors
415 V, 50 Hz, TEFC, Class 'F' Insulation, S1 Continuous Duty and Ambient Temp
50°C with supply variation voltage $\pm 10\%$ & Frequency $\pm 5\%$ as per IS: 325, IS: 8789.

2 POLE (3000 rpm)						4 POLE (1500 rpm)						6 POLE (1000 rpm)						8 POLE (750 rpm)						
FRAME SIZE AMW	OUTPUT KW/HP	FLC AMPS	SPEED RPM	COS ϕ	EFF %	FRAME SIZE AMW	OUTPUT KW/HP	FLC AMPS	SPEED RPM	COS ϕ	EFF %	FRAME SIZE AMW	OUTPUT KW/HP	FLC AMPS	SPEED RPM	COS ϕ	EFF %	FRAME SIZE AMW	OUTPUT KW/HP	FLC AMPS	SPEED RPM	COS ϕ	EFF %	
63 K	0.18/0.25	0.50	2775	0.75	60	63 N	0.18/0.25	0.85	1330	0.71	61	71 K	0.18/0.25	0.75	910	0.65	50	80 K	0.18/0.25	0.73	680	0.65	56	
63 N	0.25/0.33	0.69	2760	0.78	65	71 K	0.25/0.33	0.88	1370	0.72	58	71 N	0.22/0.30	0.96	910	0.65	50	80 N	0.25/0.33	1.0	680	0.65	60	
71 N	0.37/0.50	1.05	2790	0.80	64	71 N	0.37/0.5	1.05	1370	0.76	68	80 K	0.37/0.50	1.3	920	0.66	65	90 S	0.37/0.5	1.40	690	0.65	66	
71 NF	0.55/0.75	1.45	2780	0.80	67	80 K	0.55/0.75	1.5	1400	0.78	70	80 N	0.55/0.75	1.6	920	0.70	71	90 L	0.55/0.75	1.80	690	0.65	67	
80 N	0.75/1.0	1.8	2800	0.83	73	80 N	0.75/1.0	1.8	1400	0.80	73	90 S	0.75/1.0	2.0	925	0.75	71	100 LK	0.75/1.0	2.10	690	0.70	71	
80 F	1.1/1.5	2.6	2800	0.84	73	90 S	1.1/1.5	2.5	1400	0.81	75	90 L	1.1/1.5	2.8	925	0.75	73	100 L	1.1/1.5	3.30	690	0.70	72	
90 SF	1.5/2.0	3.2	2810	0.84	80	90 L	1.5/2.0	3.4	1400	0.80	76	100 L	1.5/2.0	3.8	925	0.76	76	112M	1.5/2.0	4.20	690	0.70	74	
90 LF	2.2/3.0	4.6	2840	0.85	80	100 LK	2.2/3.0	4.6	1400	0.82	79	112 M	2.2/3.0	4.8	925	0.79	80	132 S	2.2/3.0	5.20	700	0.76	79	
100 LF	3.0/4.0	6.4	2840	0.84	82	100 L	3.0/4.0	7.0	1420	0.78	80	132 S	3.7/5.0	0.7	950	0.79	84	160 MK	3.7/5.0	7.60	710	0.82	83	
100 LV	3.7/5.0	7.5	2840	0.86	82	112 M	3.7/5.0	7.3	1440	0.82	84	132 M	5.5/7.5	12	955	0.79	84	160 M	5.5/7.5	11.5	710	0.82	83	
132 S	5.5/7.5	10.5	2875	0.87	85	132 S	5.5/7.5	10.5	1440	0.86	87	160 M	7.5/10	15	965	0.80	88	160 L	7.5/10	15.0	710	0.82	85	
132 SF	7.5/10.0	14	2855	0.88	85	132 M	7.5/10.0	13.7	1440	0.86	85	160 L	11/15	22.5	965	0.80	88	180 L	9.3/12.5	18.5	720	0.82	86	
132 MF	9.3/12.5	16.5	2870	0.90	86	160 M	9.3/12.5	18	1440	0.82	88	160 LF	12/16.3	24	970	0.79	89	180 L	11/15	22.0	720	0.82	86	
160 M	11/15	21	2900	0.87	86	160 M	11/15	20.6	1460	0.84	88	180L	15/20	26.5	970	0.85	89							
160MF	15/20	28.5	2915	0.86	88	160 L	15/20	28	1460	0.84	89													
160LF	18.5/25	33.5	2915	0.88	88	180 M	18.5/25.0	33	1465	0.85	90													
180M	20/27	35	2930	0.88	88	180 L	22.0/30.0	40	1465	0.85	91													
180MF	22/30	38	2915	0.88	88																			



FOOT MOUNTED (IM-B3) IS:1231.

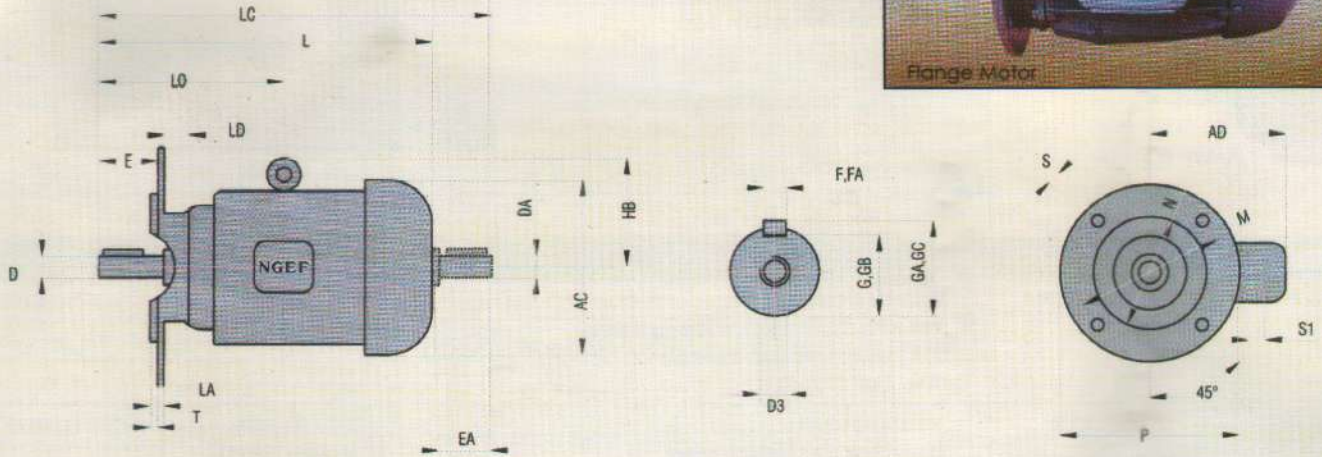


Dimensions in mm

FRAME SIZE AMW	A	B	C	H-0.5	K	D, DA	E, EA	F, FA	G, GB	GA, GC	D3	L	LC	LO	AA	AB	AC	BA	BB	HA	HD	AD	S1
63 K,N	100	80	40	63	7	11J6	23	4	8.54	12.5	-	224	252	103	39	130	124	30	110	10	165	-	1xCP16
71 K,N	112	90	45	71	7	14J6	30	5	11	16	-	235	270	120	35	142	140	40	130	10	181	-	1xCP16
80 K,N	125	100	50	80	10	19J6	40	6	15.5	21.5	-	270	314	140	38	155	156	40	130	13	158	140	1xCP19
90 S	140	100	56	90	10	24J6	50	8	20	27	-	290	347.5	156	35	170	176	48	130	13	178	151	1xCP19
90 L	140	125	56	90	10	24J6	50	8	20	27	-	315	372.5	168.5	35	170	176	48	155	13	178	151	1xCP19
100 L	160	140	63	100	12	28J6	60	8	24	31	-	358	429	193	43	195	212	50	170	15	234	164	1xCP19
112 M	180	140	70	112	12	28J6	60	8	24	31	-	378	448	200	55	230	234	55	175	15	268	189	1xCP25.4
132 S	216	140	89	132	12	38K6	80	10	33	41	M12X28	440	535	239	62	265	274	70	185	20	304	215	1xCP25.4
132 M	216	178	89	132	12	38K6	80	10	33	41	M12X28	478	573	258	62	265	274	70	225	20	304	215	1xCP25.4
160 M	254	210	108	160	15	42K6	110	12	37	45	M16X36	582	708	323	72	320	335	78	260	25	370	257	1xCP31.8
160 L	254	254	108	160	15	42K6	110	12	37	45	M16X36	628	752	345	72	320	335	78	305	25	370	257	1xCP31.85
180 M	279	241	121	180	15	48K6	110	14	42.5	51.5	M16X36	644	772	351.5	82	360	372	95	300	30	420	292	1XCP38
180 L	279	279	121	180	15	48K6	110	14	42.5	51.5	M16X36	682	810	370.5	82	360	372	95	340	30	420	292	1XCP38

Second Shaft extension supplied on request

FLANGE MOUNTED (IM-B5) IS:2223.



FRAME SIZE	FLANGE	M	N	P	S	T	D.DA	E.EA	F.FA	G.GB	GA.GC	D3	LA	LD	LO	L	LC	AC	HB	AD	S1
63 K,N	F115B	115±0.3	95J6	140	10	3.0	11J6	23	4	8.5	12.5	-	9	16	103	224	252	124	-	114	1XCP16
71 K,N	F130B	130±0.3	110J6	160	10	3.5	14J6	30	5	11	16.0	-	9	16	120	235	270	140	-	121	1XCP16
80K,N	F165B	165±0.3	130J6	200	12	3.5	19J6	40	6	15.5	21.5	-	10	20	140	270	314	156	-	140	1XCP19
90S	F165B	165±0.3	130J6	200	12	3.5	24J6	50	8	20	27.0	-	10	20	156	290	347.5	176	-	151	1XCP19
90L	F165B	165±0.3	130J6	200	12	3.5	24J6	50	8	20	27.0	-	10	20	168.5	315	372.5	176	-	151	1XCP19
100L	F215B	215±0.3	180J6	250	15	4.0	28J6	60	8	24	31.0	-	11	24	183	358	429	212	134	164	1XCP19
112M	F215B	215±0.3	180J6	250	15	4.5	28J6	60	8	24	31.0	-	11	24	200	378	448	234	156	189	1XCP25.4
132S	F265B	265±0.3	230J6	300	15	4.0	38K6	80	10	33	41.0	M12x28	12	24	239	440	535	274	172	215	1XCP25.4
132M	F265B	265±0.3	230J6	300	15	4.0	38K6	80	10	3.3	41.0	M12x28	120	24	258	478	573	274	172	215	1XCP25.4
160M	F300B	300±0.5	250J6	350	19	5.0	42K6	110	12	37	45.0	M16x36	13	32	323	582	708	335	210	257	1XCP31.8
160L	F300B	300±0.5	250J6	350	19	5.0	42K6	110	12	37	45.0	M16x36	13	32	345	626	752	335	210	257	1XCP31.8
180M	F300B	300±0.5	250J6	350	19	5.0	48K6	110	14	42.5	51.5	M16x36	13	32	351.5	644	772	372	241	292	1XCP38.0
180L	F300B	300±0.5	250J6	350	19	5.0	48K6	110	14	42.5	51.5	M16x36	13	32	370.5	682	810	372	241	292	1XCP38.0

Second Shaft extension supplied on request

Dimensions for face mounted motors on request

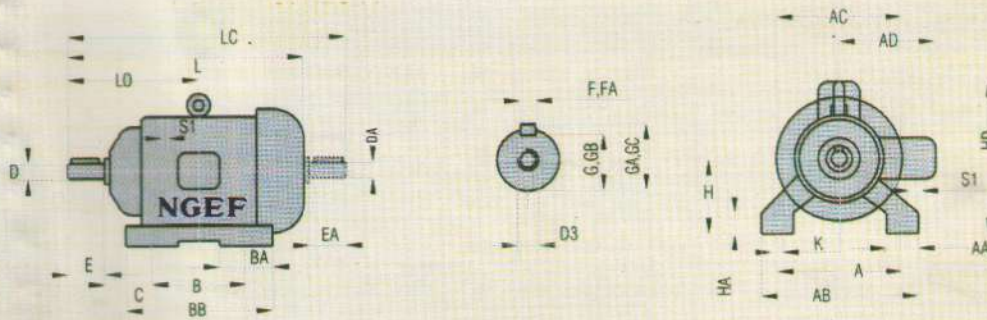
SPECIAL DESIGN FEATURES

- Motors are totally enclosed fan cooled with Sheet metal / Cast iron terminal box with IP 55 Protection as per IS 4691.
- Motor body is of cast iron with improved fins design of increased contact surface area for better cooling. This will not only enhance the over load capability but also increase its durability with trouble free operation.
- Motors conform to National and International Standards and ensure inter changeability.
- Motors are with class F insulation with temp. rise limited to class B special treatment for tropical climates.
- Optimum utilization of active materials ensures smaller frame size for the out puts.
- Dynamically balanced rotor & Fans ensure quiet and vibration- free operation.
- Rotors are pressure die cast for squirrel cage motors up to 30hp.
- High starting and pull-out torques can be offered with special designs.
- Windings are tropicalized and can withstand high thermal and mechanical stresses.
- Terminal boxes are of ample size.
- Careful selection of bearing ensure long life and trouble-free operation.
- Robust and sturdy in construction. Use of high quality materials, precision manufacturing techniques and adherence to close tolerance ensure long, trouble-free service.
- Squirrel cage motors are suitable for direct-on-line or star/delta starting. Slipring motors are suitable for resistance starting.
- Motors are thoroughly inspected at each stage with precision gauges and test equipment.
- Available in foot-mounted and flange-mounted designs. Face- mounted squirrel cage motors can be offered up to 5 hp.
- Motors are IP 55 protection to suit severe weather conditions.
- Our normal paint is light grey shade 631 as per IS 5. For corrosive atmosphere special epoxy painting on body can be given on request.
- space heaters and thermistors can be provided on request
- Reliable inverter duty (VVVF) application motors.
- Special design and technical advice can be offered for special requirements for any industry.

STANDARD SLIPRING MOTORS

Electrical data of AC, 3 Phase Slipring Motors 415 V, TEFC, Class 'F' Insulation & Ambient Temp 50°C with supply variation voltage $\pm 10\%$ & Frequency $\pm 5\%$ as per IS: 325

TYPE	OUTPUT		RATED CURRENT AT 415V	SPEED RPM	COS ϕ	EFF. %	T PO TR	ROTOR		GD KGM	WEIGHT KG
	KW	HP						VOLTAGE	CURRENT		
AMW132S4R	3.2	4.4	7.4	1450	0.72	83	4.9	Y120	17	0.127	68
AMW132M4R	4.8	6.5	11.0	1455	0.72	85	4.4	Y165	18	0.165	80
AMW132S6R	2.5	3.4	6.0	955	0.72	81	3.0	Y120	13.2	0.200	72
AMW132M6R	3.5	4.8	8.5	960	0.70	81	3.9	Y120	18.5	0.253	84
AMW132S8R	1.58	2.0	4.3	710	0.60	80	2.75	Y120	8.0	0.200	72
AMW132M8R	2.2	3.0	6.3	710	0.61	80	2.75	Y120	12.0	0.253	84

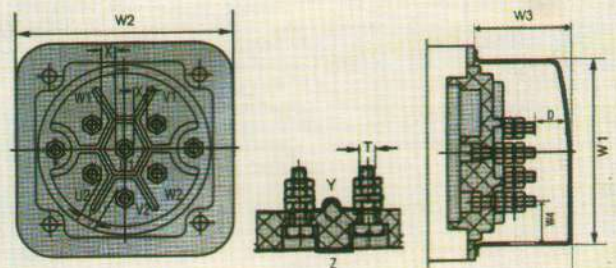


FRAME SIZE	A	B	C	H	K	L	LC	LO	AA	AB	AC	AD	BA	BB	HA	HD
AMW 132 S	216	140	89	132-0.5	12	572	673	239	62	265	274	215	70	185	20	304
AMW 132 M	216	178	89	132-0.5	12	610	711	258	62	265	274	215	70	225	20	304
FRAME SIZE	SHAFT EXTENSION															
FRAME SIZE	S1	D.DA		E.EA		F.FA		G.GB		GA.GC		D3				
AMW 132 S	2x29 0	38 k 6		80		10		33		41		M 12				
AMW 132 M	2x29 0	38 k 6		80		10		33		41		M 12				

TERMINAL BOX ARRANGEMENT WITH SHEET METAL IP-55 PROTECTION

Drg. No. 34 9910 8021

FRAME SIZE	Ter Board Size	Terminal Board Dimension					Clearance					Cree page			
		W1	W2	W3	W4	S1	T	X1	X2	X3	D	Y	Z	AD	
AM 80	15	84	84	42	17	1xCP 19	M4	6	8	13	16	19	151	164	140
AM 90															
AMW 100															
AM 112	25	107.5	108	55	30	1xCP25.4	M5	11	13	7.5	23	20	20	189	
AM 132															215
AM 160	60	138	145	65	60	1xCP 31.8	M6	16	19	11	35	26	30	240	
AM 180	100	238	228	108	72	1XCP38.0	M8	18	22	12	40	29	42	294	



- NGEF (HUBLI) LTD., manufacture energy efficient motors with reliability and minimum running cost to the ultimate user. These motors use minimum power and operate at low temperature with more durability for longevity.
- Money is saved, with saving in energy year after year - more economical
- Our energy efficient motors are always designed for higher efficiency values than specified figures in IS : 12615 with shortest payback period on the investment.
- NGEF (HUBLI) LTD., Manufacture Crane and Hoist Squirrel cage Motors. Frame size AMKW 63 to AMKW 180 Pole 4,6,8.
- Our motors are robustly designed and best suited for critical application of crane and hoist drives.

NGEF (HUBLI) LTD.,

(A Government of Karnataka Enterprise)



REGION	CITY	ADDRESS	PHONE	FAX
NORTH	NEW DELHI	M/s NGEF (Hubli) Ltd., Pocket No. 10, Flat No.37&38 Expandable DDA Flats Nasirpur Dwarka, Phase - 1, NEW DELHI 110 045	011-25397763 (M) 3310372992	011-25397763
EAST	KOLKATA	M/s NGEF (Hubli) Ltd., Ground Floor, 7-B Middleton Street KOLKATA - 700 071	033-22822279 (M) 9831106570	033-2282279
WEST	MUMBAI	M/s NGEF (Hubli) Ltd., 3rd Floor ION House, Dr.E. Mosses Road Mahalaxmi, MUMBAI - 400 011.	022-24951783 (M)9967624115	022-24951783
	PUNE	M/s NGEF (Hubli) Ltd., No.213, Prandya Office's Complex 9/6 Sane Guruji Road, Near Nilayam Theatre, PUNE - 411 030	020-24331686 (M)9545197096	020-24337850
	AHMEDABAD	M/s NGEF (Hubli) Ltd., 38 Professors colony Navarangapur, AHMEDABAD - 380 009	(M)9825049543	
	KOLHAPUR	M/s NGEF (Hubli) Ltd., RS NO 328 Godown NO. 3 Opp Sakal Papers SHIROLI At Post: TOP Tq: Hatkanangle Dist : KOLHAPUR	0231-2656124	0231-2584284
SOUTH	BANGALORE	M/s. NGEF (Hubli)Ltd., Mysore Lamps & works Complex, Old Tunkur Road, 8th Main, Malleswaram West, BANGALORE-560 055	080-23460708 (M)9845568155	080-23460708
	SECUNDERABAD	M/s NGEF (Hubli) Ltd., P.B. NO 1648, CHANDRALOK COMPLEX 111 SARAJINI DEVI ROAD, SECUNDERABAD	(M)9945444963	

NGEF (HUBLI) LTD.,

(A Government of Karnataka Enterprise)

HEAD OFFICE & FACTORY : SURVEY NO.23, P.B. ROAD, RAYAPUR, DHARWAD - 580 009. KARNATAKA
Phone : 0836-2322656, 2322389, 2322934
Fax : 0836-2322656, Email : ngefhub@sancharnet.in visit us : www.ngefhub.com